

www.excello.com



Promises Kept.
Dependability you can trust.



Excello Circuits is a premier PCB manufacturer located in Placentia, California. We focus on offering a one-stop manufacturing solution to our customers. We aim to service our customers' needs from the earliest stages of product development, including design services, engineering support and prototype development, all the way through the production manufacturing of time-critical and technologically complex printed circuit board products.

Excello is known for its reliability, on time delivery, competitive pricing, and customer service. Our skilled engineering staff works directly with our customers and our in house manufacturing team in order to ensure accuracy and quality. Our customer oriented culture drives our primary goal of partnering with our customers and working hand in hand by providing the technical resources and capacity necessary to support and manufacture printed circuit boards that meet your most challenging goals. We understand our customer's critical requirements and the importance of quality and reliability.

Corporate SnapShot

a PCB expert since 1992



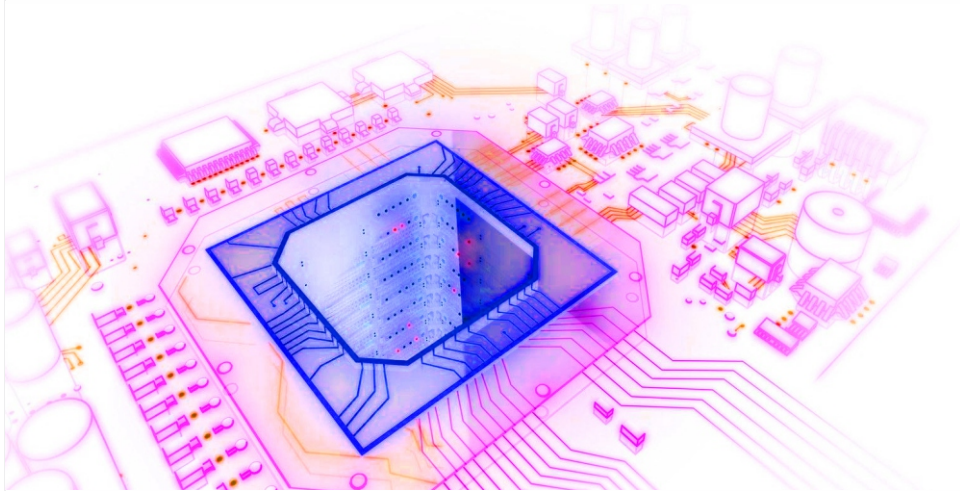
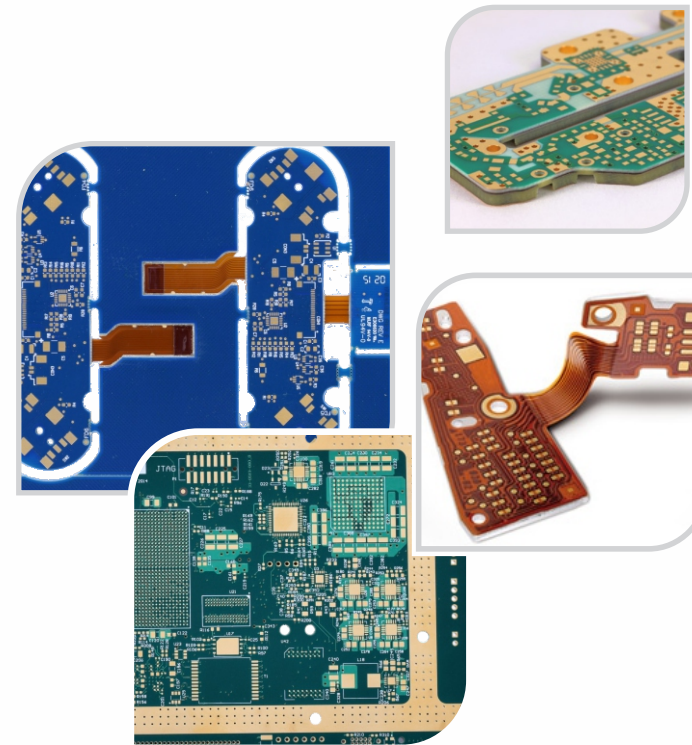
Promises Kept. Dependability you can trust.

- ⊙ Established in 1992
- ⊙ Owner Managed
- ⊙ Facility Size 25,000 ft²
- ⊙ 40 Employees
- ⊙ Operating at 65% Capacity
- ⊙ Debt-Free & Financially Strong

What We Do

The science of reliability, on time delivery and competitive pricing

- © Rigid PCB
- © High Copper PCB (upto 16oz)
- © Rigid Flexible PCB
- © HDI (high Density Interconnect Pcb's)
- © Flex PCB
- © MCPCB
- © Prototypes through mid volume production



Excello Circuits serves a diverse customer base including aerospace, medical, automotive, high-end industrial, communication and contract manufactures. Excello Circuits manufactures printed circuit boards from simple single sided, to heavy copper up to 16oz, and complex multilayer and HDI printed circuit boards up to 24 layers. We provide flexibility and quality to ensure our customer's expectations are exceeded.

Quality Control Policy & Quality Target

Quality is not an act, it's a habit



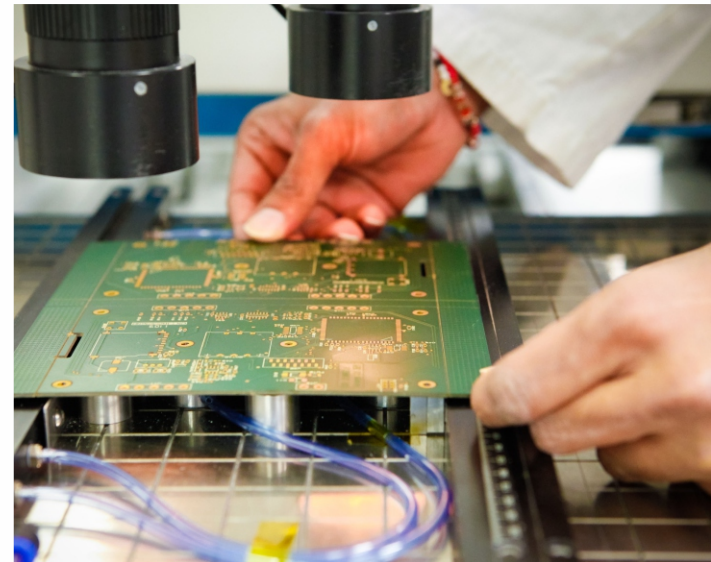
Quality Control Policy

- ◎ ISO 9001:2008 Certified Company
- ◎ AS 9100C Compliant
- ◎ Production Process Control
- ◎ Statistical Process Control
- ◎ 100% AOI & Visual Inspection
- ◎ DFM Review
- ◎ 100% E-Test: Netlist Flying Grid Test to 250V and Visual Inspection
- ◎ Impedance Control Test
- ◎ Micro Section Report and Analysis



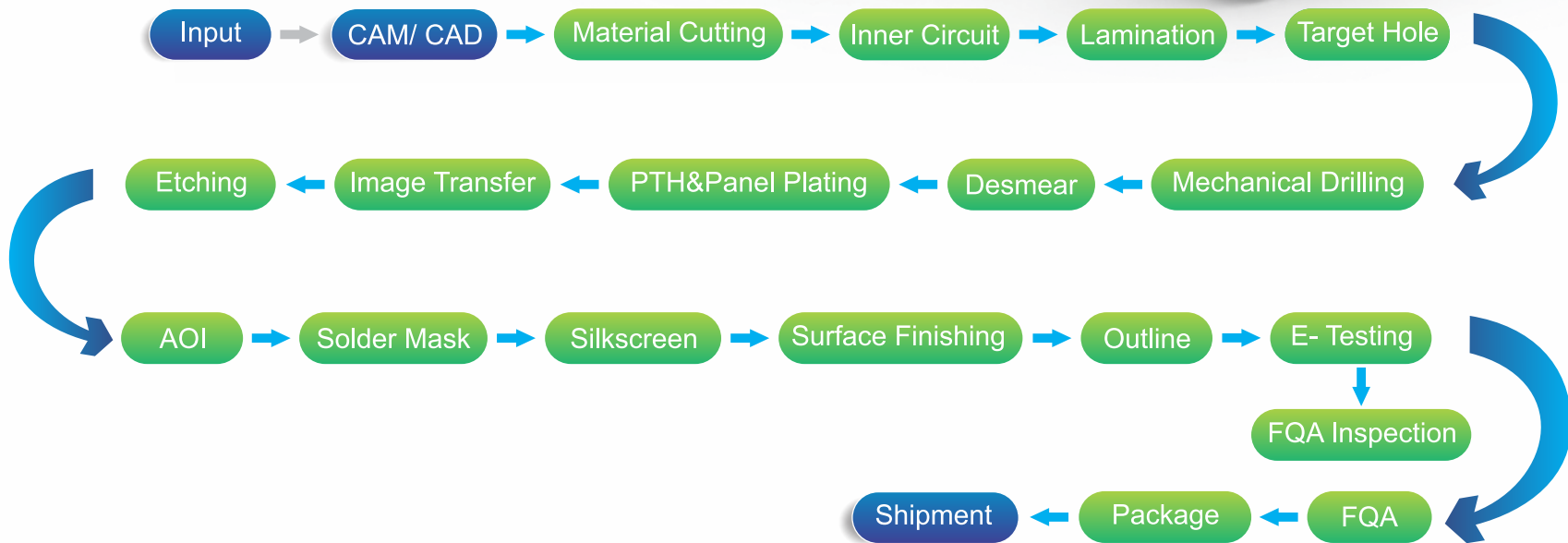
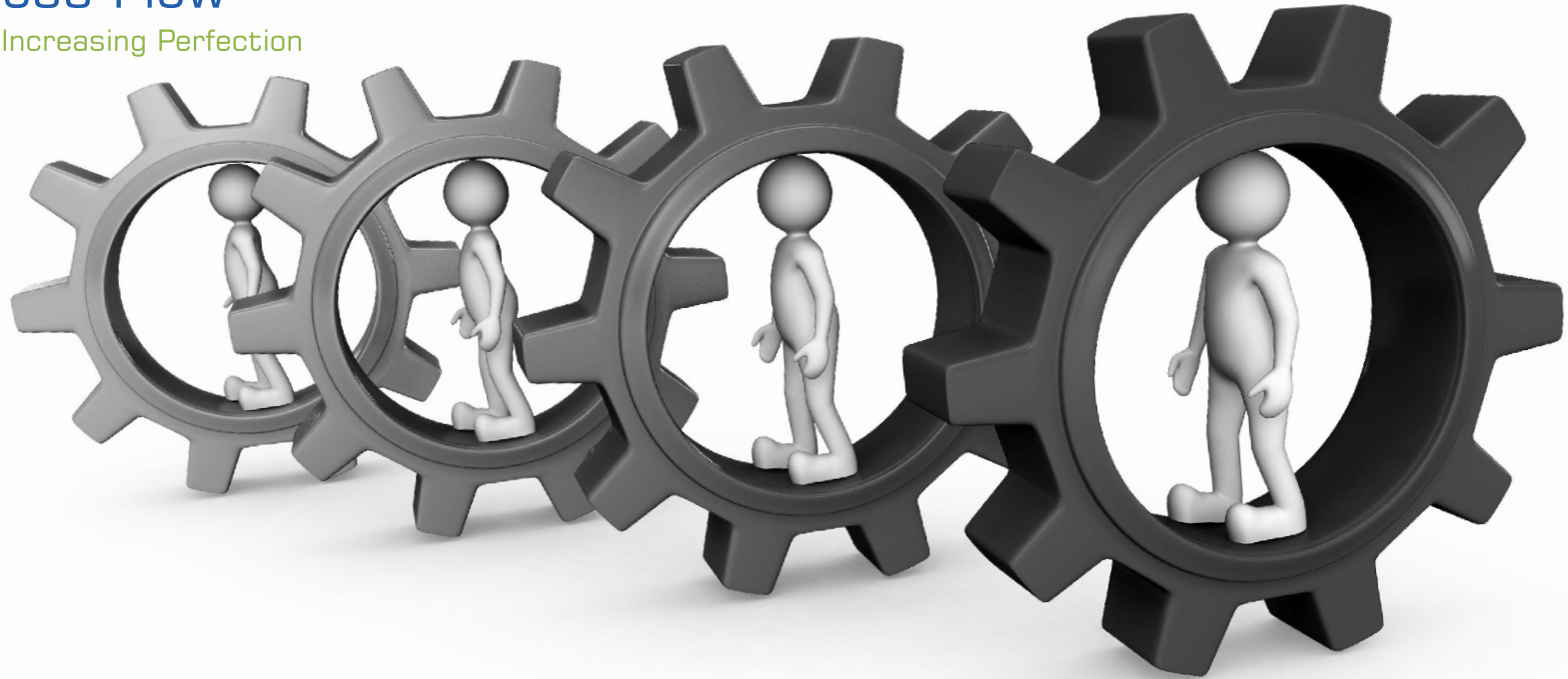
Quality Targets

- ◎ Product Pass Rate: >99%
- ◎ On Time Delivery Rate: > 98%
- ◎ Customer Complaint Rate: <1 %
- ◎ Customer Satisfaction Rate: >98%



Process Flow

Seeking Increasing Perfection





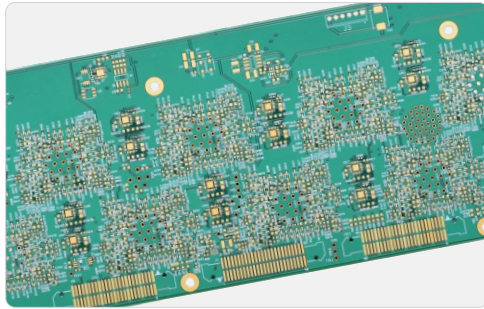
Capability and Technologies

Continuous Improvement, Key to Success

Standard Features	Standard	Advanced	HDI Features	Standard	Advanced	PCB Technology	Standard	Advanced
Maximum Layer Count	16	24	Minimum Microvia Hole Size	0.004"	0.003"	Rigid-Flex & Flexible Circuits	Y	Y
Maximum Panel Size	18"x24"	21"x26"	Capture Pad Size	0.010"	0.009"	Buried and Blind Vias	Y	Y
Outer Layer Trace/Spacing	.005" / .005"	.003" / .003"	Glass Reinforced Dielectrics	Y	Y	Sequential Lamination	Y	Y
Inner Layer Trace/Spacing	.005" / .005"	.003" / .003"	Maximum Aspect Ratio	0.7:1	1:1	Impedance Control	± 10%	± 5%
Maximum PCB Thickness	0.250"	0.250"	Stacked Microvias	Y	Y	Hybrids & Mixed Dielectrics	Y	Y
Minimum PCB Thickness	.008"	.004"	Copper Filled Microvias	Y	Y	Aluminum Backed PCB	Y	Y
Minimum Mechanical Drill Size	.008"	.004"	Buried Filled Vias	Y	Y	Buried Capacitance	N	Y
Maximum PCB Aspect Ratio	10:1	20:1	Maximum No. of Buildup Layers	3+N+3	5+N+5	PCB with Cavity	N	Y
Maximum Copper Weight	6oz	16oz				Non-Conductive Via Fill (VIP)	Y	Y
Minimum Copper Weight	1/2oz	1/4oz				Conductive Hole Fill	Y	Y
Minimum Core Thickness	0.004"	0.0015"				Depth Control Drill and Rout	Y	Y
Minimum Dielectric Thickness	0.003"	0.002"				Back drill	Y	Y
Minimum Pad Size Over Drill	0.018"	0.016"				Edge Plating	Y	Y
Solder Mask Registration	± 0.002	± 0.0015				Etch Back	Y	Y
Minimum Solder Mask Dam	0.004"	0.0025"				In-Board Beveling	Y	Y
Copper Feature to PCB edge	0.015"	0.010"				2-D Bar Code Printing	Y	Y
Tolerance on Overall Dimensions	± 0.005"	± 0.002"						

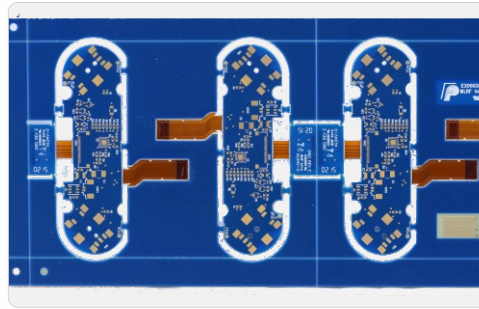
Product Snapshot

Innovations Make Excellence



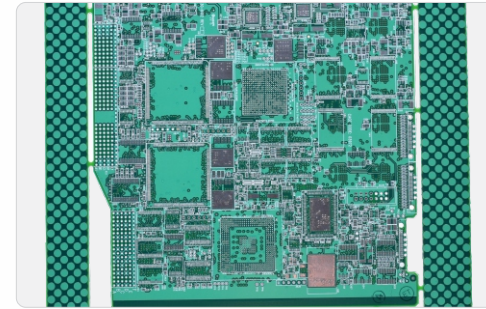
HDI PCB

- 12 Layers
- .062" +/- .006 370-HR
- 5/5 Line/Space
- 8 mil via
- ENIG Finish



Rigid-Flex PCB

- 6 Layers
- .047" +/- .004 Fr4 + Polyimide
- 3/3 Line/Space
- 6 mil via
- ENIG Finish



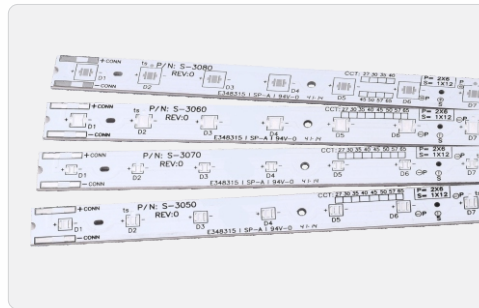
Rigid PCB

- 14 Layers
- .070" +/- .007 FR-4Tg 180
- 4/4 Line/Space
- 10 mil via
- Immersion Silver Finish



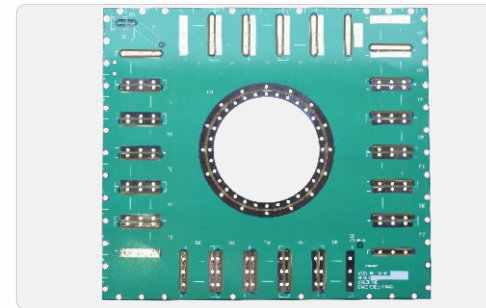
Flexible PCB

- 1 Layers
- .008" +/- .001 Kapton
- 2 Sides Cover Lay
- 3oz Cu
- ENIG Finish



MCPCB

- .040" +/- .004
- 2Wmk Dielectric
- LED White Mask
- OSP Finish



High Copper PCB

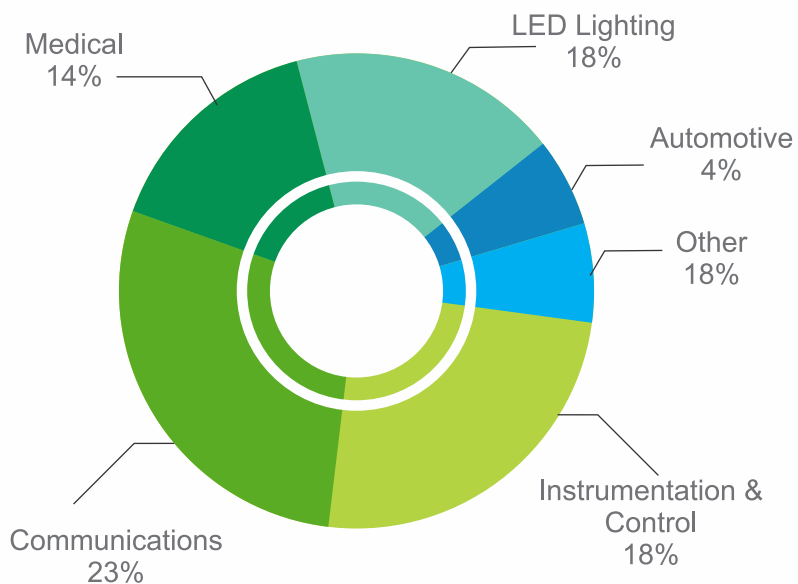
- 2 Layer
- .110" +/- .010 FR-4 Tg 180
- 16oz Cu
- HASL Finish



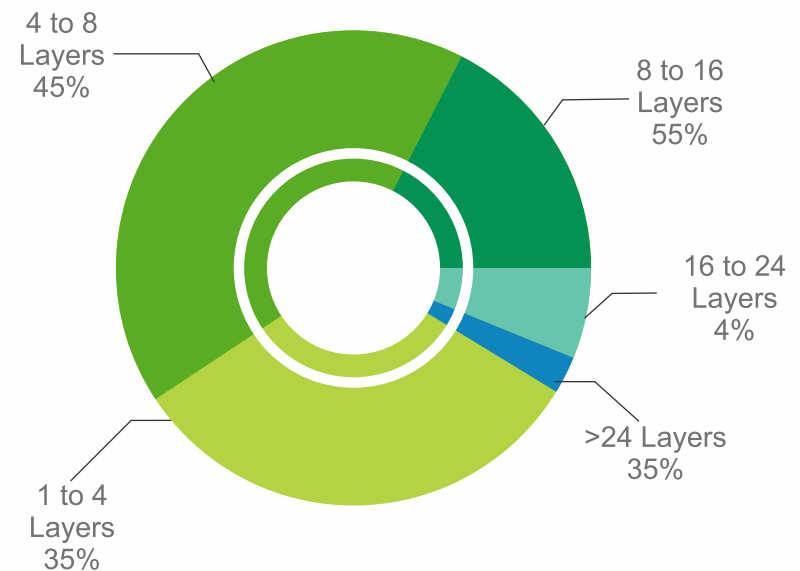
Application & Market

The joy of exceeding our customer's expectations

We focus on delivering value and quality to a wide variety of markets. The markets we serve are constantly evolving and demand time-critical and technologically complex printed circuit boards. Our focus on advance technology and providing a one-stop total solution benefits our customers in the various markets we serve.



Product Segment



Product Mix by Layer count

Certifications

The Pursuit of Excellence

Excello Circuits is dedicated to continuously improving the quality of its products and services. Our PCBs are built to the client's specifications while maintaining the highest quality of workmanship and inspection.



NSF-ISR

Registered to ISO 9001





Our Clients

Go where the winners go
- Trusted by industry leaders

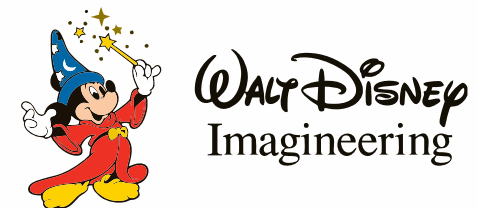
fabrinet

**CURTISS-
WRIGHT**



Honeywell

**Rockwell
Collins**



AMETEK[®]






Why Excello?

The Pursuit of Excellence



- ⊙ High Quality Standards and Cost Competitive
- ⊙ One Stop solution from prototype through high volume
- ⊙ Friendly customer service, responsive and committed to Total Customer Satisfaction
- ⊙ On time delivery rating exceeds 98.5



Our team takes pride in pushing ourselves to exceed your expectations on product quality and on time delivery, across a broad range of technologies. Our promise is to continually evaluate and invest in advanced equipment, new manufacturing processes, and engineering to reduce delivery times, improve quality, and decrease costs for our customers.



Excello Circuits Inc.

1924 Nancita Cir. Placentia, CA 92870, United States
Phone: +1(714)993-0560 | Fax: +1(714)524-1805
E-Mail: info@excello.com | Web: www.excello.com